

THE PAN-AFRICAN FRIENDSHIP QUILT CHALLENGE 2016

‘The road to a friend’s house is never long ‘

The Pan-African Friendship Quilt Challenge invites you to be part of a special challenge, to follow a quilting path, and take the steps to create special bonds and friendships on a quilt journey across the continent.

The challenge involves quilters being ‘twinned’ with other quilters from another African country. Every set of quilters will produce two quilts – each quilter works on her own quilt and then swaps with her twin – who works on the piece adding to the design and increasing the size. When this is completed, the quilt top is returned, her twin who then sandwiches, quilts and finishes her own quilt.

During the challenge you are to contact and keep in touch with your quilt twin. You can do so by e-mail, Whatsapp, FaceBook or other means, even snail-mail. This is a great opportunity for you to get to know more about each other, particularly with regard to quilting. You can chat about the quilt design, the colours, techniques and the style of your own quilt and help your twin, with tips and advice, should she not be at the same skill level as yourself. Each person must commit to making a quilt, using all her skill and passion and to follow the steps and to meet the deadlines in the challenge. The finished quilts will travel side by side on an exhibition to various African countries.

Timeframe: November 2015 to mid September 2016.

Cost: R 75.00 - includes sponsored fabrics and a quilt-travel diary.

Some dates and details:

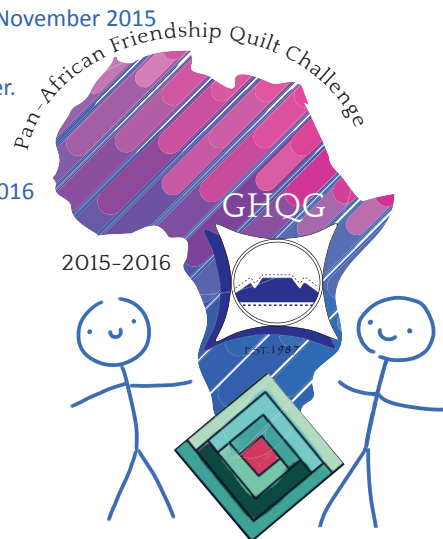
- Quilt size: The completed quilt can be square or rectangular with no side longer than 125cm (49 inches).
- “Getting to know you information” to be in by 30th November 2015
- Challenge packs to be handed out at the GHQG Meeting in November or sent by 15 December.
- Step 1 – to be completed by February 2016
- Step 2 – to be completed by May 2016
- Step 3 - Quilts to be completed by mid September 2016
- Exhibited at FYNBOS 2016
- GHQG will be the friendly courier of your quilts around Africa

If you wish to know more and would like to take part in this challenge. **Contact Renée de Beyer:**

reneedebeyer@gmail.com

021 531 4429 or 082 663 5640

Good Hope Quilters’ Guild EST.1987
Pan-African Friendship Quilt Challenge
Sponsored by African Skies Fabrics



Sponsored by African Skies Fabrics

THE PAN-AFRICAN FRIENDSHIP QUILT CHALLENGE 2016

'The road to a friend's house is never long'

The Pan-African Friendship Quilt Challenge invites you to step onto a path that will lead you to create unique quilts and make special bonds and friendships on a quilt journey across the continent.

Planning your journey

- Fill in the 'Getting to know you' document describing yourself and your quilting interests. Include a photograph of yourself and a few others that you think would be interesting.
- Complete and sign the ENTRY FORM. Commit to making and producing work of a high standard and meeting the deadline date of each step of the challenge.
- Send or E-mail this information and the signed commitment form to: Renée de Beyer
reeneдебeyer@gmail.com 021 531 4429 or 082 663 5640 so that your name is included on the list to participate and pay the money due and send proof of payment.
Banking details : Good Hope Quilters' Guild, Standard Bank, Pinelands
(Branch code 036309), Acc 073027405 (Swift Code SBZAJJ – international)

Deadline date: 30 November 2015.

- You will be given a "Quilt Twin" who will be your quilt buddy from another African country. You will each be given your twin's information so you can get to know each other.

Let the Journey Begin

By mid December 2015, you, and your quilt twin will each receive a parcel of fabric, donated by African Skies Fabric Manufacturer, a quilt travel-diary and the 'Getting to know you' details and the instructions and steps you must take on your quilt journey.

STEP 1

'My sister and I held hands and stepped onto the road together'

Follow the instructions to stay on the path.

Read the 'Getting to know you' details about your quilt twin that she has shared with you and make contact with her.

Prepare your fabrics and begin.

Each of you will make the central portion of your own quilt. The portion you make does not have to be square - it could be rectangular or another shape. The size though, should be no smaller than 30cm (12 inches) and no bigger 60cm (24 inches). Work within these parameters so that you allow enough 'area' for your twin to work on in the next step.

The colours, the design and techniques you use will be your choice.

You must use at least 2 of the sponsored fabric pieces in your quilt, and you are free to add 3 to 5 other fabrics from your stash.

As you work - keep in touch with your quilt twin, by email or other means and by writing some comments in your quilt travel-diary.

Complete Step 1 by 29 February 2016.

Place the central portion of your quilt in the supplied envelope/bag with the remaining challenge fabric given by the sponsor and include some of the fabric you have added and the quilt travel- diary.

GHQG will courier your parcel to your country co-ordinator in Africa.

The parcel will be handed to your twin and you will be given her quilt and fabrics.



- **STEP 2**

'The many miles pass swiftly, taken in a joyous stride - and my world all seems brighter, when a friend walks by my side.'

Once you receive the parcel you will find the inner portion the quilt, some fabrics and the travel-diary. You must work on the quilt of your quilt twin, adding to the design and size.

- You must use at least 1 of the sponsored fabrics and at least 1 of the fabrics supplied by your twin. You may add no more than 2 other fabrics from your stash.
- Commit to doing your best effort, adding good workmanship, design and colours to compliment your twins' work, and she will do the same.
- The size when completed: The quilt can be square or rectangular with no side longer than 125 cm (49 inches). In other words, by adding your work to the central portion of the quilt you make it larger but it should be within the surface size of 156.25 square centimetres (48.51 square inches).
- Add some information to your quilt twin's travel- diary.
- **Complete Step 2 by 31 May, 2016.**

When you have completed working on the quilt top - Place the completed quilt top with the remaining fabric and the quilt travel-diary in the envelope/bag provided. The quilt must be returned to your quilt twin and you will receive your own quilt top back from her. GHQG will courier the parcel back to the original owner.

- **STEP 3**

'What I share with my friend -I give with love and joy in my heart'

You must complete your own quilt.

- Sandwich, quilt and bind your quilt.
- Attach a 10cm (4 inch) wide sleeve firmly to the top back of the quilt, 5cm (2 inches) short of the quilt edge at each end of the sleeve. Make a 5cm (1 inch) gap in the centre on large quilts.
- Stitch a cloth label in the lower left hand corner on the back of the quilt. It must include the quilt title and have information details of you and your twin included.
- Add the final information to your quilt travel-diary.
- **Quilts to be completed by 15 September 2016**

If you are a twin from an African country, your completed quilt and travel-diary will need to be couriered by GHQG to Cape Town, South Africa in time for the exhibition at FYNBOS.

The Pan-African Quilt Friendship Challenge 2016 quilts will be exhibited 'side by side' at the **FYNBOS EXHIBITION in October 2016.**

Note this is not a competition. It is a friendship challenge and the intention is that the quilts will form a travelling exhibition that can be shown by the guilds\quilt groups that participated in the different countries.

The fabric of our lives is woven with colour and texture and drawn together with threads of friendship across the miles and days.

Co-ordinator: Renée de Beyer E-mail: reneedebeyer@gmail.com 021 531 4429 or 082 663 5640

PAN-AFRICAN FRIENDSHIP QUILT Challenge

'Getting to know you' Information

Give some information about yourself that you can share with your quilt twin

Tell us some of your history, your likes and dislikes and about your hopes and quilting dreams.

THIS IS ME

Hello, my name is.....

I am years old and was born in.....

In which country do you live? City or countryside?

My occupation:

My family.....

My pets.....

My sport\outdoor activities:..... favourite pastimes and hobbies:.....

QUILTING

I have been quilting for years

I make sorts of quilts. My skill level is.....

My interest in lies in..... [types of piecing, appliqué and quilting –
by hand or by machine, designing, innovative or traditional or free style, embellishing or surface treatments]

I want to learn more about.....

I would love to attend a workshop on..... or given by.....

GROUP and GUILD

The group and guild I belong to is.....

We meet.....

We enjoy - demonstrations, talks, charity work, show and tell.

I work on my own doing.....

QUILTING SUPPLIES

I get my quilting supplies from.....

Cost of fabric..... brands available.....

Books and magazines or websites that interest me.....

IDEAS AND INSPIRATION

I get ideas and inspiration from.....

RECENT PROJECTS\QUILTS I HAVE MADE

Look at what I have made.....

Attached are some photos and images

This is my story and I would love to share this information with my 'quilt twin'.

'What's the fun of an adventure if you can't share it with a friend?'

Pam Brown

CONDITIONS

- The entry fee is R75 and is non-refundable. The pack includes sponsored fabric from African Skies and a quilt travel-diary.
Banking details : Good Hope Quilters' Guild, Standard Bank, Pinelands
(Branch code 036309), Acc 073027405 (Swift Code SBZAJJ – international)
- Good Hope Quilters' Guild undertakes to courier the quilts to and from your 'quilt twin'.
GHQG will take due care to handle and deliver your work, however the guild cannot be held responsible for any unforeseen circumstances, damage or loss of your work.
- Insurance is the participant's responsibility.

PERSONAL INFORMATION : Please PRINT.

Name:

Address:

.....

Postal code:.....Country:.....

Phone landline: Mobile/Cell phone:.....

Email:.....

I am a Guild member of

COMMITMENT

I would like to take part in the Pan-African Quilt Challenge 2016 and hereby I commit to:

- Make contact and keep in touch with my quilt twin
- Following the challenge instructions and conditions
- Meeting the deadlines and delivery arrangements
- Working, to the best of my ability, on both quilts (my own and my twin's quilt) and completing my quilt.

I agree that my quilt may be part of a travelling exhibition.

I give permission for GHQG to use images of my work (accompanied with my name and credits) to publicize the quilts made in this challenge.

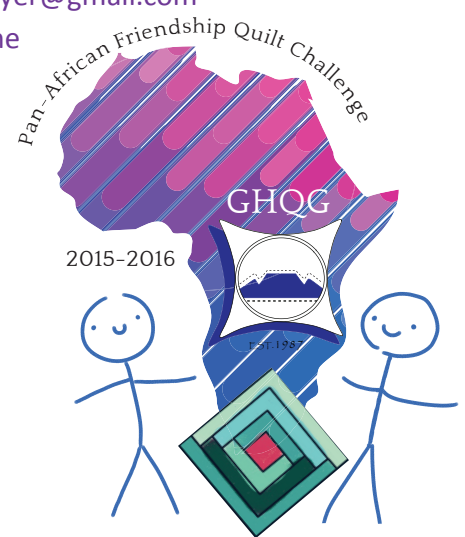
I declare that the details above are true.

.....
Signature

.....
ID no

.....
Date

- Kindly email, send or give this information to Renée de Beyer reneedebeuyer@gmail.com
+ 27 (0)21 531 4429 or 082 663 5640 so that your name is included on the list to participate and make payment by **20 October 2015**.
- The contact person in your country is:



Sponsored by African Skies Fabrics